

# NEW MOTOR VEHICLE REGISTRATIONS

AUSTRALIA  
PRELIMINARY

EMBARGOED UNTIL 11:30AM THURS 21 DECEMBER 1995

## NOVEMBER KEY FIGURES

### TREND ESTIMATES

	Nov 95	monthly % change	annual % change
Total new motor vehicle registrations	50 056	-1.1	-5.2
Passenger vehicles	42 105	-0.8	-3.9
Other vehicles	7 951	-2.5	-11.6

### SEASONALLY ADJUSTED

	Nov 95	monthly % change	annual % change
Total new motor vehicle registrations	49 288	-5.4	-5.2
Passenger vehicles	41 588	-5.0	-2.8
Other vehicles	7 700	-7.5	-16.5

### ORIGINAL ESTIMATES

	Nov 95	monthly % change	annual % change
Total new motor vehicle registrations	51 940	-2.9	-6.3
Passenger vehicles	43 700	-3.3	-3.9
Other vehicles	8 240	-0.8	-17.2

## NOVEMBER KEY POINTS

### TREND ESTIMATES

- The trend estimate for total new motor vehicle registrations for November 1995 continued to fall and is now 8.3 per cent lower than the peak in April 1995. Other vehicle registrations decreased by 2.5 per cent to reach the level recorded in January 1994. Passenger vehicle registrations have fallen to the lowest level recorded since July 1994.

**TAKE CARE!**  
Trend estimates are revised as new monthly data become available.

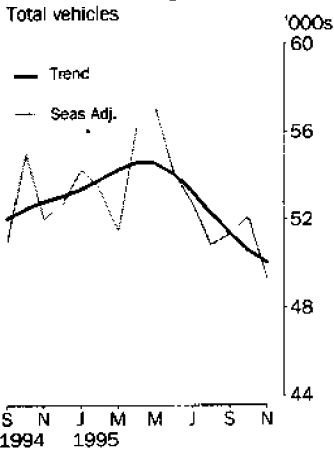
### SEASONALLY ADJUSTED ESTIMATES

- Total new motor vehicle registrations fell 5.4 per cent in November 1995 and were 5.2 per cent below the figure recorded in November 1994. Passenger vehicle registrations fell 5.0 per cent compared with the previous month, and other vehicles were lower by 7.5 per cent. Registrations rose in Victoria, Western Australia, Northern Territory and the Australian Capital Territory.

### ORIGINAL ESTIMATES

- Total new motor vehicle registrations fell by 2.9 per cent in November 1995. This was 6.3 per cent below the figure recorded for the same period last year and 19.0 per cent below the high in May 1995. Passenger vehicle registrations for November 1995 dropped by 3.3 per cent and other vehicle registrations fell by 0.8 per cent compared with October 1995.

### New vehicle registrations



## INQUIRIES

- For further information about these and related statistics, contact Clare Newman on 07 3222 6180, or any ABS Office.

# NEW MOTOR VEHICLE NOTES

## FORTHCOMING ISSUES

ISSUE	RELEASE DATE
December 1995	25 January 1996
January 1996	22 February 1996
February 1996	28 March 1996

\*\*\*\*\*

## CHANGES IN THIS ISSUE

This edition includes changes to the seasonally adjusted series and the trend estimate series as a result of the annual re-estimation of seasonal factors.

\*\*\*\*\*

## TREND REVISIONS

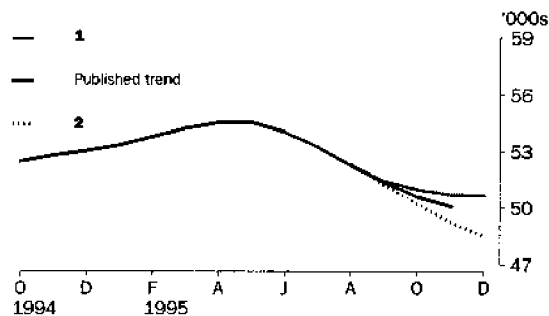
The most recent trend estimates are likely to be revised when new seasonally adjusted estimates become available.

The graph below presents the effect of two possible scenarios on the previous trend estimates:

- 1** The December seasonally adjusted estimate for total vehicle registrations is higher than the November seasonally adjusted estimate by 5.2%.
- 2** The December seasonally adjusted estimate for total vehicle registrations is lower than the November seasonally adjusted estimate by -5.2%.

The percentage change of 5.2% was chosen because the average absolute percentage change, based on the last 11 years, has been 5.2%.

**TAKE CARE!**  
Trend estimates are revised as new monthly data become available.



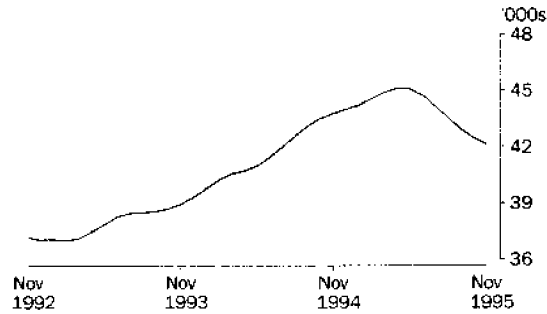
A 5.2 per cent rise in total seasonally adjusted new motor vehicle registrations in December 1995 would result in a flattening of the rate of decline in the revised trend. A fall of this magnitude in the December seasonally adjusted figure would show a strengthening decline in the revised trend from May 1995.

W. McLennan  
Australian Statistician

# VEHICLE REGISTRATIONS BY TYPE: Trend series

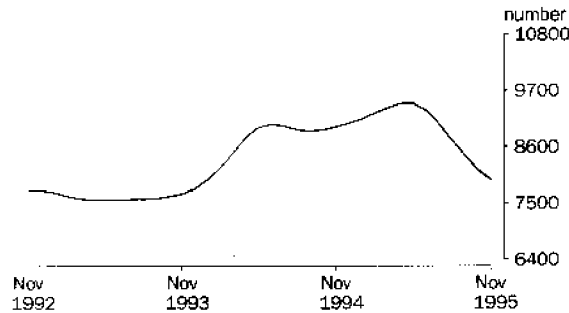
## PASSENGER VEHICLES

Since the peak in April 1995, the trend level for passenger vehicle registrations has fallen 6.7 per cent, although the November 1995 estimate is still 13.7 per cent above the most recent low recorded in December 1992.



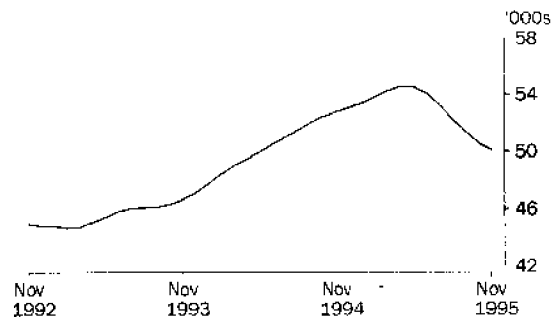
## OTHER VEHICLES

The trend estimate for other vehicle registrations has fallen steadily since peaking in May 1995, with the level for November 1995 now 15.9 per cent below the level recorded then. The level now stands at 5.0 per cent above the May 1993 level and 2.4 per cent above the November 1992 level.



## TOTAL VEHICLES (EXCLUDING MOTOR CYCLES)

Following a period of sustained growth from March 1993 to April 1995, the trend level has declined to be 8.3 per cent below the peak in April 1995. The trend estimate for November 1995 is now 5.2 per cent below the level recorded in November 1994 but is 12.1 per cent above the low recorded in February 1993.





NEW MOTOR VEHICLES, Registrations By Type: All Series

Month	Passenger vehicles	Other vehicles	Total
ORIGINAL			
<b>1994</b>			
September	42 373	8 065	50 438
October	45 354	8 988	54 342
November	45 485	9 949	55 434
December	43 948	8 850	52 798
<b>1995</b>			
January	36 283	6 657	42 940
February	41 292	7 900	49 192
March	47 264	9 982	57 246
April	39 470	8 250	47 720
May	52 556	11 566	64 122
June	47 511	12 308	59 819
July	43 723	9 196	52 919
August	45 920	8 215	54 135
September	41 305	7 980	49 285
October	45 179	8 310	53 489
November	43 700	8 240	51 940
SEASONALLY ADJUSTED			
<b>1994</b>			
September	42 446	8 553	50 999
October	45 804	9 216	55 019
November	42 791	9 219	52 011
December	43 334	9 378	52 712
<b>1995</b>			
January	45 312	8 909	54 221
February	44 471	8 931	53 402
March	42 540	8 928	51 468
April	46 219	9 969	56 188
May	47 388	9 696	57 083
June	44 433	9 684	54 116
July	44 032	8 688	52 720
August	42 434	8 427	50 860
September	42 697	8 643	51 340
October	43 792	8 325	52 117
November	41 588	7 700	49 288
TREND ESTIMATES <sup>2</sup>			
<b>1994</b>			
September	43 121	8 912	52 034
October	43 534	8 936	52 469
November	43 804	8 996	52 800
December	43 998	9 060	53 058
<b>1995</b>			
January	44 226	9 147	53 373
February	44 547	9 252	53 799
March	44 896	9 360	54 255
April	45 122	9 443	54 565
May	45 097	9 452	54 549
June	44 729	9 322	54 052
July	44 179	9 060	53 239
August	43 540	8 736	52 276
September	42 952	8 431	51 383
October	42 453	8 157	50 611
November	42 105	7 951	50 056

<sup>2</sup> Trend estimates for May 1995 to October 1995 have been revised.

NEW MOTOR VEHICLES, Registrations By Type: **Original**

Month	Passenger vehicles	Light commercial vehicles	Rigid trucks	Articulated trucks	Non-freight carrying trucks	Buses	Total (excludes motor cycles)	Motor cycles
<b>1994</b>								
September	42 373	6 390	877	384	91	323	50 438	1 677
October	45 354	7 224	921	413	86	344	54 342	1 658
November	45 485	7 974	1 058	449	102	366	55 434	1 981
December	43 948	6 979	1 017	409	60	385	52 798	1 892
<b>1995</b>								
January	36 283	5 434	592	270	40	321	42 940	1 854
February	41 292	6 365	830	293	28	384	49 192	1 686
March	47 264	8 196	964	360	78	384	57 246	1 848
April	39 470	6 772	723	317	83	355	47 720	1 458
May	52 556	9 477	1 130	429	83	447	64 122	1 960
June	47 511	9 725	1 229	718	98	538	59 819	1 590
July	43 723	7 547	965	229	98	357	52 919	1 686
August	45 920	6 611	870	227	113	394	54 135	1 751
September	41 305	6 434	867	210	124	345	49 285	1 732
October	45 179	6 680	907	273	62	388	53 489	1 775
November	43 700	6 597	871	302	78	392	51 940	2 265

NEW MOTOR VEHICLES, Registrations By State: All Series

Month	New South Wales	Victoria	Queensland	South Australia	Western Australia	Tasmania	Northern Territory	Australian Capital Territory	Australia
ORIGINAL									
<b>1994</b>									
September	18 124	11 489	9 230	3 619	5 245	1 247	550	934	50 438
October	19 342	12 743	10 762	3 371	5 358	1 274	592	900	54 342
November	20 419	12 554	9 910	3 733	5 925	1 280	607	1 006	55 434
December	17 623	12 527	10 918	3 490	5 379	1 363	463	1 035	52 798
<b>1995</b>									
January	15 906	9 628	7 354	2 876	5 016	879	478	803	42 940
February	17 808	11 740	8 868	3 365	5 008	1 003	530	870	49 192
March	20 896	14 066	9 602	4 025	5 593	1 097	774	1 193	57 246
April	17 485	10 211	10 755	2 786	4 359	819	537	768	47 720
May	22 787	15 465	11 568	4 342	6 355	1 356	976	1 273	64 122
June	20 519	15 586	9 555	4 184	6 558	1 214	956	1 247	59 819
July	19 063	10 489	13 234	2 992	4 676	1 029	534	902	52 919
August	18 859	13 678	9 124	3 963	5 416	1 269	680	1 146	54 136
September	16 345	12 123	9 450	3 452	4 986	1 260	604	1 065	49 285
October	18 775	12 317	10 747	3 647	5 132	1 280	656	935	53 489
November	18 222	13 012	8 456	3 753	5 804	853	688	1 152	51 940
SEASONALLY ADJUSTED									
<b>1994</b>									
September	18 849	11 452	9 422	3 393	5 296	1 097	594	897	50 999
October	19 997	12 916	10 477	3 367	5 457	1 248	588	970	55 019
November	18 363	12 260	9 747	3 415	5 512	1 253	571	891	52 011
December	18 628	12 386	10 527	3 510	5 111	907	555	1 087	52 712
<b>1995</b>									
January	19 900	12 602	9 263	3 711	5 797	1 200	678	1 068	54 221
February	19 369	12 430	9 917	3 609	5 267	1 196	642	972	53 402
March	18 375	12 720	8 884	3 602	5 049	1 099	673	1 066	51 468
April	21 028	12 088	11 772	3 430	5 211	1 105	586	967	56 188
May	19 280	13 705	10 456	4 145	6 145	1 411	800	1 140	57 083
June	18 512	13 678	9 426	3 702	5 713	1 194	790	1 101	54 116
July	19 190	10 875	12 000	3 088	5 041	1 081	499	945	52 720
August	17 670	12 523	9 075	3 624	5 162	1 173	639	994	50 860
September	17 512	12 667	9 752	3 419	5 187	1 131	652	1 021	51 340
October	18 904	11 790	10 069	3 448	5 130	1 199	636	939	52 117
November	16 388	12 935	8 576	3 442	5 340	847	664	1 098	49 288
TREND ESTIMATES <sup>1</sup>									
<b>1994</b>									
September	18 888	11 958	9 821	3 376	5 303	1 203	552	933	52 034
October	19 004	12 176	9 818	3 407	5 368	1 179	567	950	52 469
November	19 078	12 332	9 833	3 453	5 394	1 150	587	973	52 800
December	19 165	12 420	9 848	3 510	5 384	1 128	605	997	53 058
<b>1995</b>									
January	19 268	12 524	9 861	3 577	5 371	1 126	625	1 021	53 373
February	19 398	12 632	9 935	3 622	5 387	1 143	644	1 038	53 799
March	19 522	12 717	10 078	3 638	5 428	1 169	655	1 048	54 255
April	19 508	12 778	10 273	3 628	5 475	1 191	658	1 052	54 565
May	19 346	12 763	10 447	3 594	5 491	1 209	652	1 047	54 549
June	19 031	12 649	10 481	3 549	5 457	1 207	642	1 036	54 052
July	18 662	12 502	10 340	3 506	5 385	1 186	634	1 024	53 239
August	18 271	12 372	10 076	3 469	5 292	1 154	631	1 010	52 276
September	17 902	12 304	9 779	3 441	5 210	1 111	632	1 004	51 383
October	17 550	12 304	9 464	3 425	5 160	1 065	637	1 006	50 611
November	17 349	12 277	9 269	3 401	5 108	1 010	638	1 005	50 056

<sup>1</sup> Trend estimates for May 1995 to October 1995 have been revised.



NEW PASSENGER VEHICLES, Selected Make/Models: **Original**— November 1995

Make/Model	New South Wales	Victoria	Queensland	South Australia	Western Australia	Tasmania	Northern Territory	Australian Capital Territory	Australia
<b>Ford</b>									
Falcon/Fairmont	2 074	2 320	982	444	655	91	46	190	6 802
Festiva	413	335	296	121	167	14	7	11	1 364
Laser	215	118	94	38	43	8	2	14	532
Other	374	331	149	66	102	15	11	15	1 063
Total	3 076	3 104	1 521	669	967	128	66	230	9 761
<b>Holden</b>									
Commodore/Calais	2 768	2 033	1 229	698	620	176	73	209	7 806
Barina	213	148	137	60	101	21	4	22	706
Statesman/Caprice	180	152	76	33	33	5	4	11	494
Other	239	148	65	44	98	12	8	6	620
Total	3 400	2 481	1 507	835	852	214	89	248	9 626
<b>Hyundai</b>									
Excel	874	474	418	151	495	13	24	43	2 492
Lantra	144	65	31	20	35	1	2	14	312
Sonata	75	60	38	8	45	3	8	4	241
Other	17	21	2	1	8	..	..	..	49
Total	1 110	620	489	180	583	17	34	61	3 094
<b>Mazda</b>									
121	292	123	93	40	66	7	11	23	655
323	168	140	68	26	50	2	2	7	463
626	90	65	24	21	22	..	2	7	231
Other	33	28	8	6	7	12	..	4	98
Total	583	356	193	93	145	21	15	41	1 447
<b>Mitsubishi</b>									
Magna	547	566	316	457	251	26	29	73	2 265
Lancer	245	247	190	74	65	24	9	19	873
Pajero	188	62	97	25	44	11	3	7	437
Other	102	55	39	41	25	19	1	3	285
Total	1 082	930	642	597	385	80	42	102	3 860
<b>Nissan</b>									
Micra	119	142	79	21	129	3	5	9	507
Pulsar	188	108	120	17	40	10	6	12	501
Patrol	99	61	56	14	48	2	9	5	294
Other	147	111	78	22	27	2	9	9	405
Total	553	422	333	74	244	17	29	35	1 707
<b>Toyota</b>									
Camry	737	574	293	173	220	40	47	58	2 142
Corolla	670	390	228	80	162	49	34	88	1 701
Landcruiser	336	210	244	57	147	11	34	15	1 054
Other	1 034	562	340	96	204	27	25	51	2 339
Total	2 777	1 736	1 105	406	733	127	140	212	7 236

# EXPLANATORY NOTES

## INTRODUCTION

- 1** This publication presents monthly data for registrations of new motor vehicles.
- 2** The statistics in this publication are based on procedures using the Vehicle Identification Number (VIN), adopted by the State and Territory motor vehicle registration authorities. The VIN system allows more accurate classification of vehicles. In the case of some States, data processed using the VIN are not strictly comparable with data processed prior to December 1990.

## SCOPE AND COVERAGE

- 3** Motor vehicle registration statistics are obtained from the State and Territory motor vehicle registration authorities. The statistics reflect the information recorded in registration documents. With the exception of Queensland, the statistics shown do not depart significantly from actual registrations during the period.

In the case of Queensland, a number of registrations processed in a month actually relate to vehicles registered prior to that month. Because of the lags from purchase to registration, and processing lags, the published statistics for the period can vary from actual sales of new vehicles for the same period.

- 4** The scope of the statistics:
  - includes:
    - passenger vehicles
    - light commercial vehicles
    - trucks
    - buses
    - motorcycles (note: not included in Totals)
    - vehicles with diplomatic and consular plates
    - State and Commonwealth owned vehicles
  - excludes:
    - vehicles belonging to the defence forces
    - recreation vehicles such as trail bikes and sand dune buggies (in those States where registration is required).

## SEASONAL ADJUSTMENT

- 5** Seasonal adjustment is a means of removing the estimated effects of normal seasonal variation from the series so that the effects of other influences can be more clearly recognised.
- 6** Seasonal adjustment does not remove from the series the effect of irregular or non-seasonal influences (e.g. the introduction of new models, processing delays, industrial disputes).
- 7** Irregular influences that are highly volatile can make it difficult to interpret the series even after adjustment for seasonal variation.
- 8** Seasonally adjusted series are calculated for the 'Passenger vehicles', 'Other vehicles' and 'Total vehicles' series for each State and Territory and are aggregated to obtain the total for Australia.
- 9** Seasonal adjustment factors are analysed and revised as necessary annually.





TREND ESTIMATES

**10** The smoothing of seasonally adjusted series to create trend estimates reduces the impact of the irregular component of the seasonally adjusted series. The trend estimates are derived by applying a 13-term Henderson-weighted moving average to the respective seasonally adjusted series. These trend series are used to analyse the underlying behaviour of the series over time.

**11** While this smoothing technique enables trend estimates to be produced for the latest month, it does result in revisions to the trend estimates for the most recent months as data for subsequent months become available. Generally subsequent revisions become smaller and after three months, usually have a negligible impact on the series. Changes in the original data and re-estimation of seasonal factors may also lead to revisions to the trend. For further information, see *A Guide to Interpreting Time Series — Monitoring 'Trends': an Overview* (1348.0) or contact the Assistant Director, Time Series Analysis on (06) 252 6345.

RELATED PUBLICATIONS

**12** For a more detailed break-up of the monthly figures presented here, inquiries should be made to Clare Newman on 07 3222 6180 or to any ABS office. Data on total vehicle registrations, both new and re-registrations, is available in *Motor Vehicle Census, Australia, 30 June 1993* (9309.0).

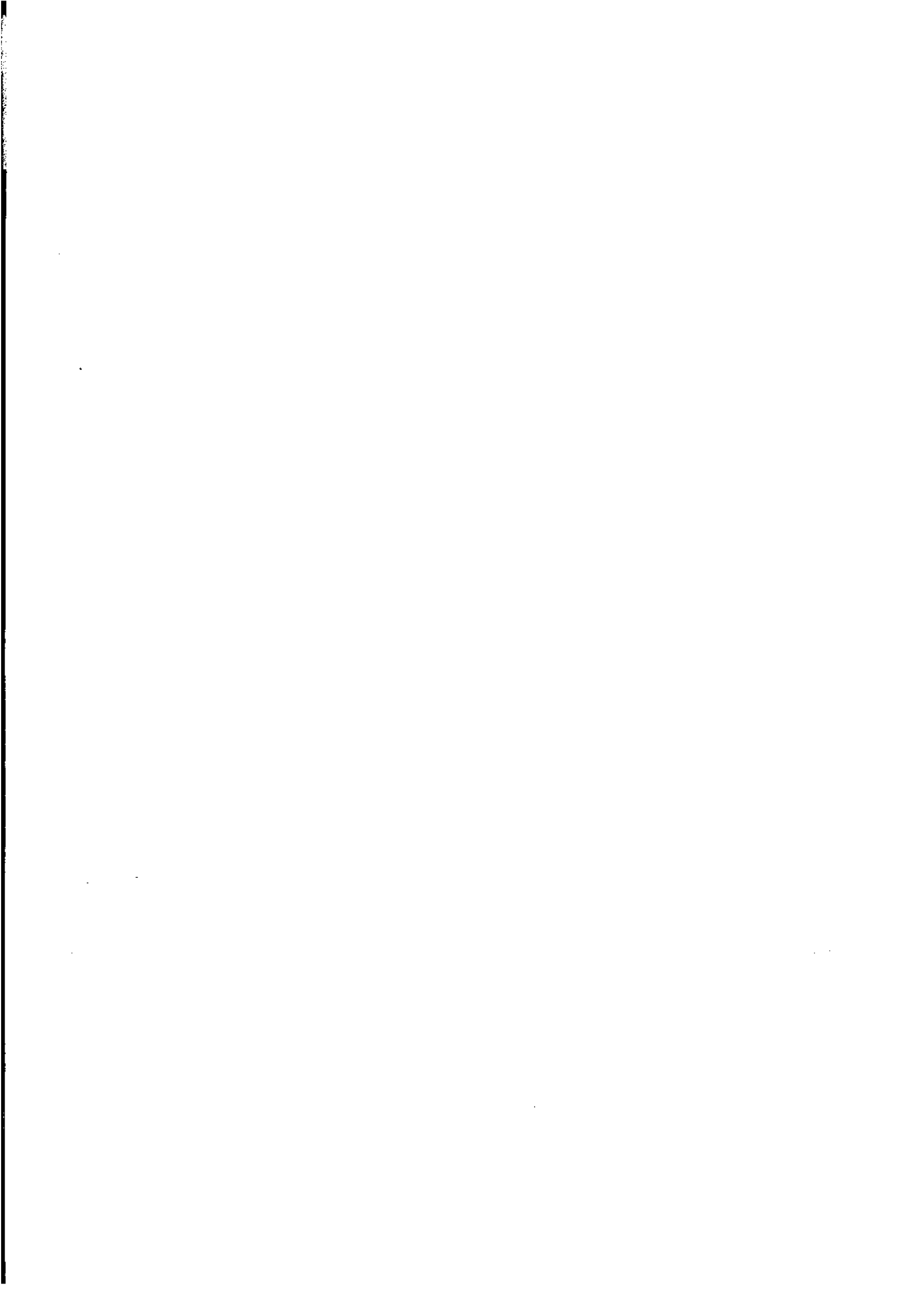
SYMBOLS AND OTHER USAGES

n.p. not available for publication, but included in totals.

## GLOSSARY

---

- Articulated trucks** Vehicles constructed primarily for load carrying consisting of a prime mover having no significant load carrying area but with a turn table device which can be linked to a trailer. With or without a trailer the gross combination mass will be 3.5 tonnes or more.
- Buses** Includes all passenger vehicles having more than nine seats, including the driver.
- Light commercial vehicles** Describes goods carrying vehicles less than 3.5 tonnes gross vehicle mass. Included are utilities, panel vans, cab-chassis and forward control vehicles (whether four-wheel drive or not).
- Motor cycles** Includes 2 and 3 wheeled mopeds, scooters, motor tricycles and motor cycles with side cars.
- Non-freight carrying trucks** Includes specialist vehicles such as ambulances, mobile cranes or vehicles fitted with special purpose equipment and having no goods carrying capacity.
- Passenger vehicles** Includes cars, station wagons, four-wheel drive passenger vehicles and forward control passenger vehicles with up to nine seats (including the driver).
- Registrations** This includes all registrations processed by the motor vehicle registration authorities in the States and Territories during the relevant period.
- Rigid trucks** Vehicles constructed primarily for load carrying with a gross vehicle mass of 3.5 tonnes or more.
- VIN** The Vehicle Identification Number (VIN) uniquely identifies each vehicle. Embedded in the number are details of make and model together with other relevant information about the vehicle. The VIN is collected by the motor vehicle registration authorities at the time of registration.



## FOR MORE INFORMATION

The ABS publishes a wide range of information on Australia's economic and social conditions. A catalogue of publications and products is available from any of our offices (see below).

### INFORMATION CONSULTANCY SERVICES

Information tailored to special needs of clients can be obtained from the Information Consultancy Service available at ABS Offices (see below).

### ABS PRODUCTS

A large number of ABS products is available from the ABS Bookshops (see below). The ABS also provides a subscription service – you can telephone the ABS Subscription Service Australia wide toll free on 1800 0206 08.

### ELECTRONIC SERVICES

A large range of data is available via on-line services, diskette, magnetic tape, tape cartridge and CD ROM. For more details about our electronic data services, contact any ABS office (see below) or e-mail us at:

X.400 (C:Australia,PUB:Telememo,O:ABS,FN:STAT,SN:INFO)  
Internet Stat.info@abs.telememo.au  
Keylink STAT.INFO/ABS

You can visit us on the Internet at: <http://www.statistics.gov.au>

### GENERAL SALES AND INQUIRIES

- Sydney 02 268 4611
  - Melbourne 03 9615 7755
  - Brisbane 07 3222 6351
  - Perth 09 360 5140
  - Adelaide 08 237 7100
  - Hobart 002 20 5800
  - Darwin 089 43 2111
  - Canberra 06 252 6627
- Information Services, ABS  
PO Box 10, Belconnen ACT 2616



2930100011959  
ISSN 1323-4528

RRP \$12.00